



## COMPANY OVERVIEW



***Lightning Tool & Manufacturing, Inc.***

215 S Moyie St.

Suite 102

Post Falls, ID 83854

Ph. 208-618-7777

Web address [www.ltm-inc.com](http://www.ltm-inc.com)

# INTRODUCTIONS

- Jeff Lange – General Manager/Owner
- Mary Lange – Office Manager/Owner
- Mark Adams – Project Management and Business Development
- Mike Farnsworth – Production Manager / Molding
- Joel Walker – Production Manager / Machining
- Dustin Stringfellow – Quality Manager
- Greg Brown – Logistics

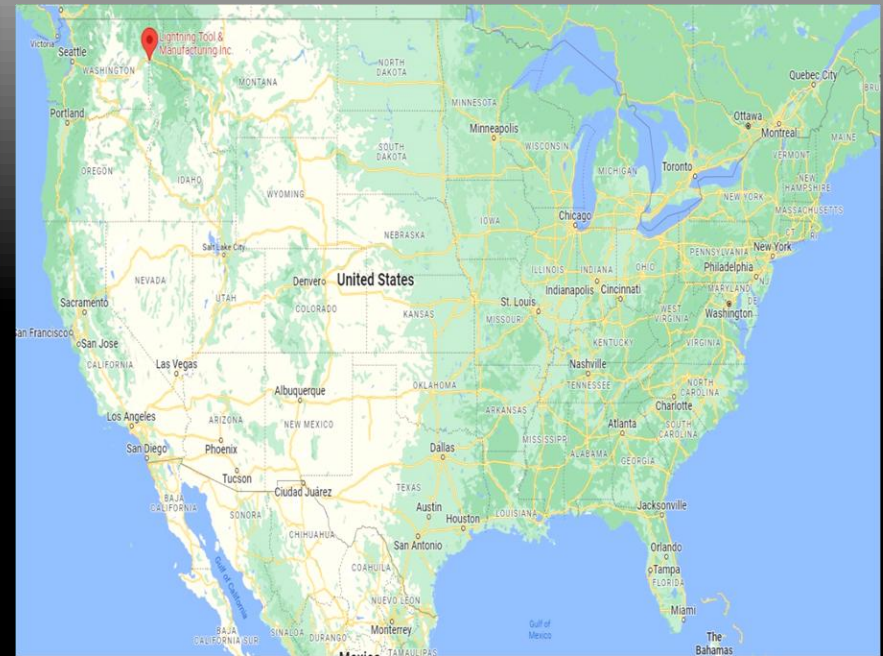
# COMPANY BIO

- Established in 2000
- 17,000 manufacturing and warehouse space
- 26 employees
- Hours of operations are currently 5 days a week, 16 hrs. / day
- ISO 9001-2015 Certified, expiration: July 22, 2027
- Reach and RoHS compliant
- DUNS # 091912761
- ITAR Registered
- Cage Code: 6G9F9

# LOCATION

## POST FALLS, IDAHO

### USA



# LTM EQUIPMENT LIST

## HIGH SPEED CNC, LATHE, AND PLASTIC INJECTION MOLDING MACHINES

3	HAAS	VF-3 SSYT	40 x 24 x 24 (XYZ)	4 and 5 Axis
1	HAAS	VF-2	30 x 16 x 24 (XYZ)	4 Axis
1	FADAL	4020	40 x 20 x 20 (XYZ)	4 Axis
1	Doosan	Lynx 2100LSYB	Multi-Axis\Sub-Spindle	6 Axis
1	ARBURG	270C Golden Edition	2 ounce shot size	44 Clamp tons
1	NISSEI	FNX-III Series	6.1 ounce shot size	110 Clamp tons
1	ARBURG	420C Golden Edition	6 ounce shot size	110 Clamp tons
3	ARBURG	570C Golden Edition	16 ounce shot size	220 Clamp tons
1	ARBURG	630S-2500-1300	1.395 pound shot size	275 Clamp tons
1	ARBURG	820S-4000-3200 + psi pkg.	3.7 pound shot size	500 Clamp tons
1	NISSEI	FVX660-310L	6.69 pound shot size	720 Clamp tons

# QUALITY SYSTEMS / SUPPORT

- ISO 9001:2015 Certified Quality System
- Certified / Documented calibration of all measuring equipment
- Master 3D Gage Portable CMM
- Brown & Sharpe CMM
- Mitutoyo Optical Comparator Model PH-R14
- ISO Certified Calibration program for all measurement equipment.
- First Off / First Article processes and optional cpk reports
- Standard Work Instructions
- Production boards
- Go / No Go Poke Yoke gauges and fixtures
- Process improvement monitoring and continuous improvement driven by data collection
- Performance Metrics continuous monitoring
- Both Internal and External Discrepant part tracking

# LTM MARKETS SERVED

## MOLDED AND MACHINED

**LTM has over 170 active customers in the following fields:**

- Sporting arms , Mil spec., and LE products
- High performance optics components
- Aerospace products both injection molded and machined
- Agricultural products and components.
- Medical noninvasive enclosures, suture tools, appliances
- Biomedical Technology companies
- Electronic housings, light bezels, light pipes, IR bezels, and internal components
- Consumer products
- Fuel systems and Diesel performance products

# LTM CAPABILITIES

## HOW WE GET IT DONE!

- 3D printing with Sindoh 3DWOX 2X Printer
- High speed machining
- Injection mold tool making
- Injection molded parts from .1 gram to over 6 pounds
- 3 axis robotic equipment
- Soft Touch Overmolding, Polymer over Metal, Polymer over Polymer and Lens Overmolding,
- Metal to plastic conversions
- Fixtures, gauges, casting tools
- Always current SolidWorks, CamWorks, MasterCAM
- Sonic Welding, Heat staking, Light assembly.
- Film Insert molding and more
- Outsource capabilities for Heat treating, Chem Film, Anodize, Laser engraving, Pad printing, Hot foil stamping and painting using ISO / AS and NADCAP certified suppliers



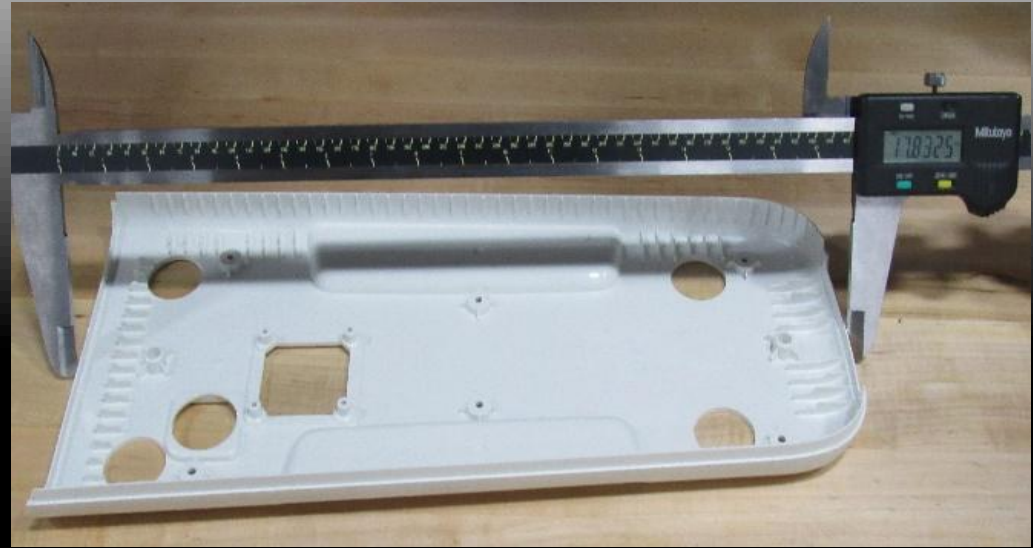
# LTM PERFORMANCE

- Goal of 99% or higher On Time delivery rating (Actual 2024 performance was 98.06%)
- Goal of 99% or higher Quality rating to date (Actual 2024 performance was 99.82%)
- 99% or better Internal planned to actual production efficiency
- Machining Internal scrap of less than .5%
- Injection Molding Internal scrap rate of .89% for 2024
- Internal monitoring of all business metrics to continually improve performance in all areas of business to provide the highest quality, delivery performance and pricing to our amazing and diverse customers

# MOLDED PRODUCT GALLERY



# MOLDED PRODUCT GALLERY

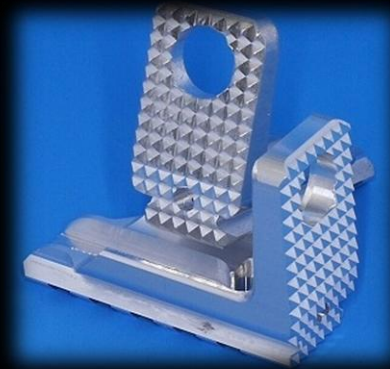
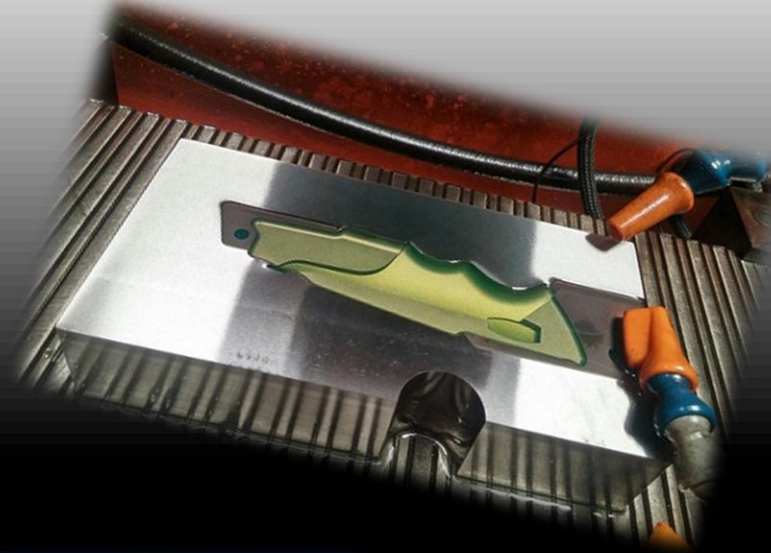
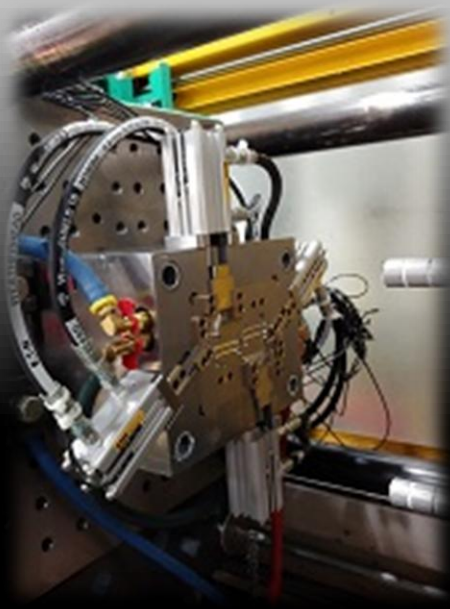




# MOLDED PRODUCT GALLERY



# TOOLING & MACHINED PRODUCTS





# SHOP FLOOR AND EQUIPMENT



THANK YOU!

