



COMPANY OVERVIEW

Lightning Tool & Manufacturing, Inc.

4642 W. Selway Ave.

Post Falls, ID 83854

Ph. 208-618-7777

Fax 208-773-7667

Web address www.ltm-inc.com



INTRODUCTIONS

- Jeff Lange – General Manager/Owner
- Mary Lange – Office Manager/Owner
- Hannah Hamelin - Customer Service
- Mark Adams – Project Management and Business Development
- Mark Laughman – Project Management and Business Development
- Mike Farnsworth – Production Manager / Molding
- Joel Walker – Production Manager / Machining
- Dustin Stringfellow – Quality Manager
- Greg Brown – Logistics

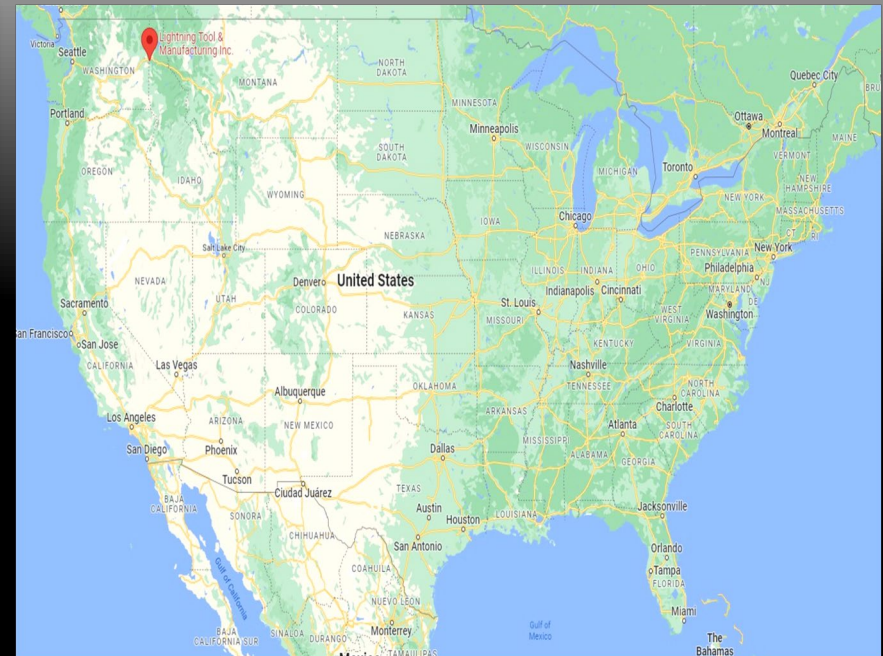
COMPANY BIO

- Established in 2000
- 25,000 square feet of manufacturing and warehouse space
- 24 employees
- Hours of operations are currently 5 days a week, 16 hrs. / day
- ISO 9001-2015 Certified, expiration: July 22, 2024
- Reach and RoHS compliant
- DUNS # 091912761
- ITAR Registered
- Cage Code: 6G9F9

LOCATION

POST FALLS, IDAHO

USA



LTM EQUIPMENT LIST

HIGH SPEED CNC, LATHE, AND PLASTIC INJECTION MOLDING MACHINES

3	HAAS	VF-3 SSYT	40 x 24 x 24 (XYZ)	4 and 5 Axis
1	HAAS	VF-2	30 x 16 x 24 (XYZ)	4 Axis
1	FADAL	4020	40 x 20 x 20 (XYZ)	4 Axis
1	Doosan	Lynx 2100LSYB	Multi-Axis\Sub-Spindle	6 Axis
1	ARBURG	270C Golden Edition	2 ounce shot size	44 Clamp tons
1	NISSEI	FNX-III Series	6.1 ounce shot size	110 Clamp tons
1	ARBURG	420C Golden Edition	6 ounce shot size	110 Clamp tons
3	ARBURG	570C Golden Edition	16 ounce shot size	220 Clamp tons
1	ARBURG	630S-2500-1300	1.395 pound shot size	275 Clamp tons
1	ARBURG	820S-4000-3200 + psi pkg.	3.7 pound shot size	500 Clamp tons
1	NISSEI	FVX660-310L	6.69 pound shot size	720 Clamp tons

QUALITY SYSTEMS / SUPPORT

- ISO 9001:2015 Certified Quality System
- Certified / Documented calibration of all measuring equipment
- Master 3D Gage Portable CMM
- Brown & Sharpe CMM
- Mitutoyo Optical Comparator Model PH-R14
- ISO Certified Calibration program for all measurement equipment.
- First Off / First Article processes and optional cpk reports
- Standard Work Instructions
- Production boards
- Go / No Go Poke Yoke gauges and fixtures
- Process improvement monitoring and continuous improvement driven by data collection
- Performance Metrics continuous monitoring
- Both Internal and External Discrepant part tracking

LTM MARKETS SERVED

MOLDED AND MACHINED

LTM has over 170 active customers in the following fields:

- Sporting arms , Mil spec., and LE products
- High performance optics components
- Aerospace products both injection molded and machined
- Agricultural products and components.
- Medical noninvasive enclosures, suture tools, appliances
- Biomedical Technology companies
- Electronic housings, light bezels, light pipes, IR bezels, and internal components
- Consumer products
- Fuel systems and Diesel performance products

LTM CAPABILITIES

HOW WE GET IT DONE!

- 3D printing with Sindoh 3DWOX 2X Printer
- High speed machining
- Injection mold tool making
- Injection molded parts from .1 gram to over 6 pounds
- 3 axis robotic equipment
- Soft Touch Overmolding, Polymer over Metal, Polymer over Polymer and Lens Overmolding,
- Metal to plastic conversions
- Fixtures, gauges, casting tools
- Always current SolidWorks, CamWorks, MasterCAM
- Sonic Welding, Heat staking, Light assembly.
- Film Insert molding and more
- Outsource capabilities for Heat treating, Chem Film, Anodize, Laser engraving, Pad printing, Hot foil stamping and painting using ISO / AS and NADCAP certified suppliers

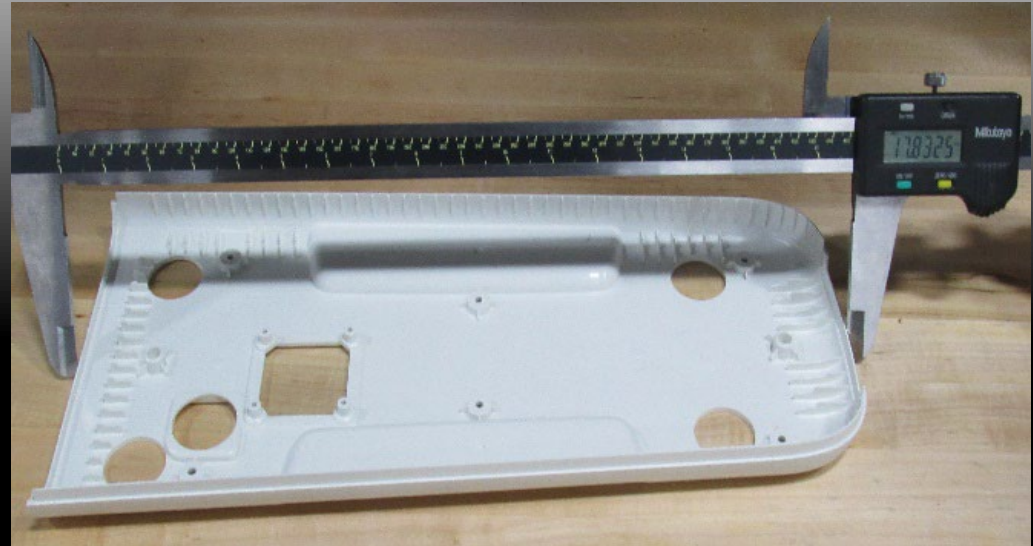
LTM PERFORMANCE

- Goal of 99% or higher On Time delivery rating (Actual 2021 performance was 98.1%)
- Goal of 99% or higher Quality rating to date (Actual 2023 performance was 99.87%)
- 99% or better Internal planned to actual production efficiency
- Machining Internal scrap of less than .5%
- Injection Molding Internal scrap rate of .54% for 2023
- Over \$5.5 million in sales
- Internal monitoring of all business metrics to continually improve performance in all areas of business to provide the highest quality, delivery performance and pricing to our amazing and diverse customers

MOLDED PRODUCT GALLERY



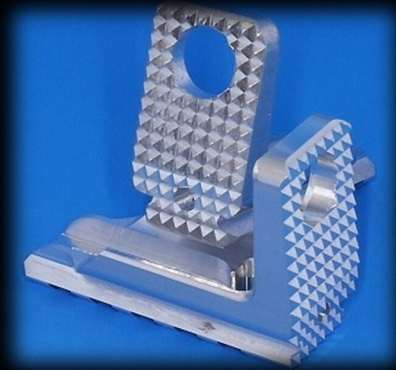
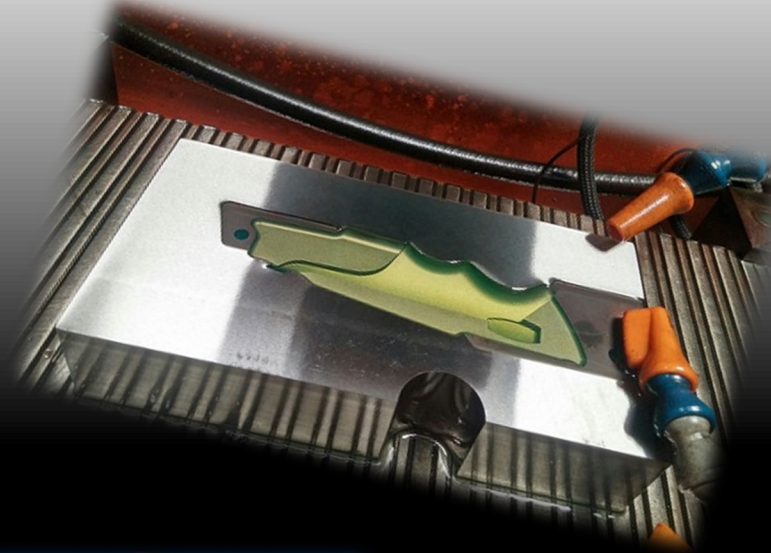
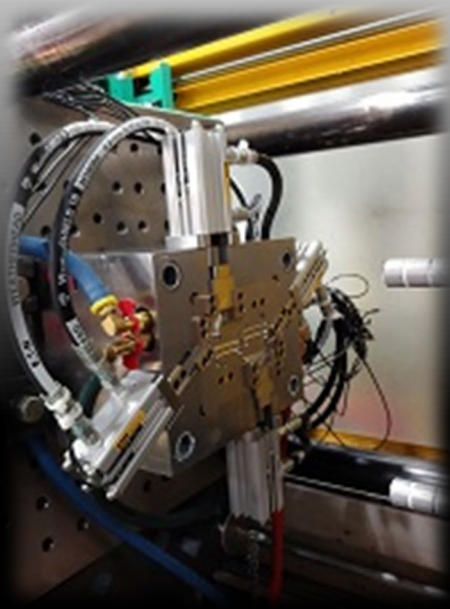
MOLDED PRODUCT GALLERY



MOLDED PRODUCT GALLERY



TOOLING & MACHINED PRODUCTS



SHOP FLOOR AND EQUIPMENT



THANK YOU!

